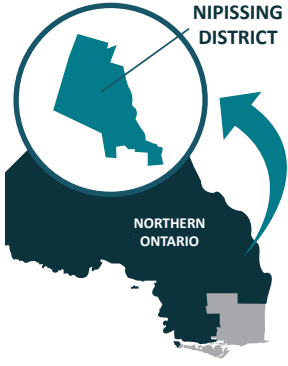


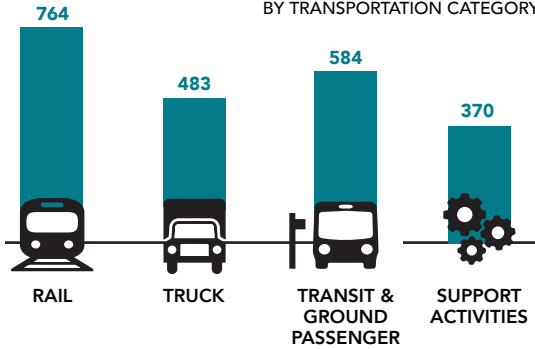
DID YOU KNOW ...



2,201 JOBS WERE OCCUPIED IN GROUND TRANSPORTATION IN NIPISSING DISTRICT IN 2016

12.1% INCREASE IN NUMBER OF JOBS IN TRANSPORTATION IN NIPISSING DISTRICT FROM 2012-2016

OF THESE 2,201 JOBS THIS IS THE BREAKDOWN BY TRANSPORTATION CATEGORY:



GROUND TRANSPORTATION



ABOUT **200,000** PEOPLE IN ONTARIO MAKE THEIR LIVELIHOOD IN THE TRUCKING SECTOR*

TRUCKING SECTOR IS PROJECTED TO GROW

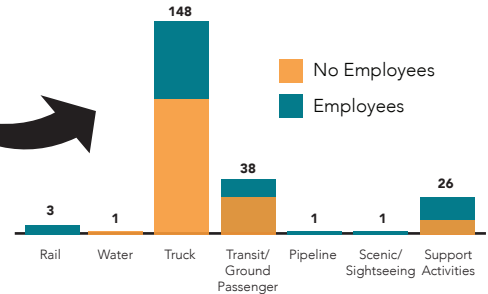
28% BY 2020*



MAJOR SHORTAGE OF QUALIFIED TRANSPORT TRUCK DRIVERS*

218 BUSINESSES IN TRANSPORTATION INDUSTRY IN NIPISSING DISTRICT

Of these 218 businesses **65%** are owner operated



* Source: Statistics Canada Canadian Business Patterns



Public transit made its debut in 1947. For 22 years this service was privately owned before the City of North Bay acquired it in 1972. At the time, 13 school type buses were operated by 23 operators.**

CONVENTIONAL TRANSIT**



25 PERMANENT OPERATORS

17 SPAREBOARD OPERATORS

1,295,925 KMS TRAVELLED EVERY YEAR

1,360,337 PASSENGER TRIPS EVERY YEAR

SPECIALIZED TRANSIT SERVICE - PARA BUS**



4 PERMANENT OPERATORS

4 PART-TIME OPERATORS

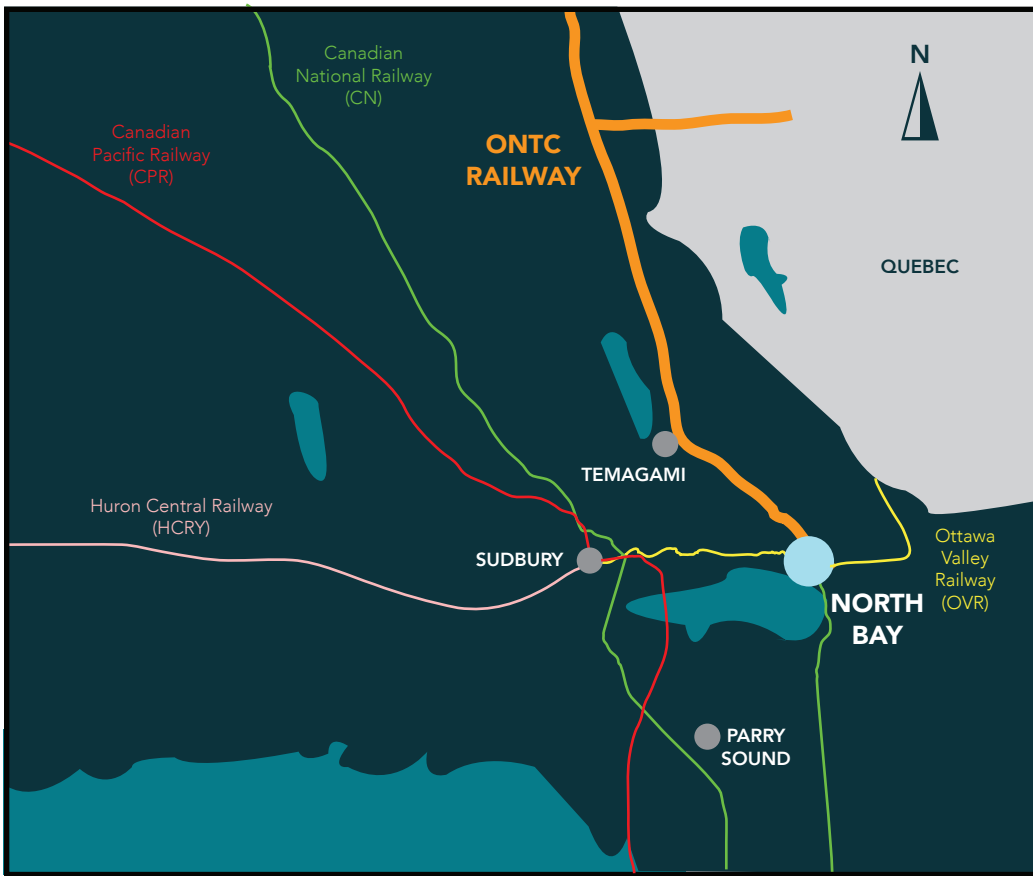
162,669 KMS TRAVELLED EVERY YEAR

32,037 PASSENGER TRIPS EVERY YEAR

** Source: City of North Bay Transit

TOP OCCUPATIONS IN NIPISSING DISTRICT (2016) WITHIN TRANSPORTATION:

Bus Drivers & Other Transit Operators	314
Transport Truck Drivers	284
Railway Conductors & Assistant Conductors	113
Railway & Yard Locomotive Engineers	109
Railway Yard & Track Maintenance Workers	103



ONTARIO NORTHLAND
PARTNERS WITH TRUCKING COMPANIES
THROUGHOUT THE NORTHEAST
**TO PROVIDE BOTH RAIL
& TRUCK TRANSPORTATION**

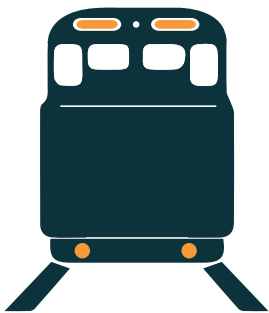
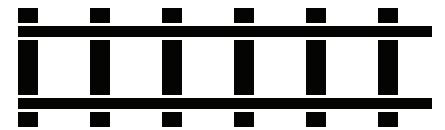
North Bay is a rail interchange point. CN, ONR & OVR connect and exchange freight in North Bay.

**RAILWAYS MOVE
1 TONNE OF FREIGHT
A DISTANCE OF 1 KILOMETRE
FOR ONLY 3 CENTS**

**NORTH BAY IS HOME
TO OTTAWA VALLEY RAILWAY'S
CORPORATE OFFICE**



➤➤➤ **Ontario Northland**

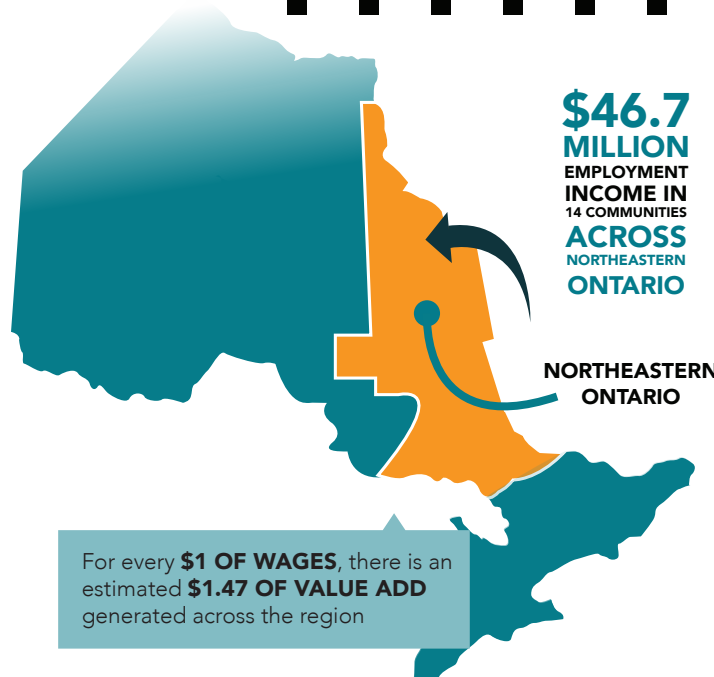


ONTARIO NORTHLAND IS THE LARGEST TRANSPORTATION EMPLOYER IN NIPISSING DISTRICT

ONTARIO NORTHLAND CURRENTLY HAS **362** EMPLOYEES IN NIPISSING DISTRICT

125+ NEW HIRES IN 2016

75+ NEW HIRES IN NORTH BAY IN 2017



\$46.7 MILLION EMPLOYMENT INCOME IN 14 COMMUNITIES ACROSS NORTHEASTERN ONTARIO

NORTHEASTERN ONTARIO

For every **\$1 OF WAGES**, there is an estimated **\$1.47 OF VALUE ADD** generated across the region



650 MILES MAINLINE TRACK



29,293 CARLOADS FREIGHT/YEAR



243,482 PASSENGERS MOTOR COACHES/YEAR